

VAKI Fish Pump

High capacity, efficient and easy to move around site

To protect your investment during handling operations, you need a safe, gentle, fast way to transfer fish. From an economic standpoint, VAKI Fish Pumps are capable of reducing operating costs and dramatically improving efficiency. VAKI Fish Pumps are precision manufactured from the highest-quality materials and are available in two sizes; the VAKI 6" Fish Pump and the VAKI 8" Fish Pump. For many years, Aquaculturists around the world have utilized the robust, proven performance of VAKI Fish Pumps to move salmon, trout, cleaner fish, char, tilapia, bass, bream, shrimp, and many other species.

Advantages

- Gentle on fish – fish in water at all times.
- High capacity.
- Fully compatible with VAKI Smart Flow.
- Precision control.
- Easy to set-up and move around site.
- Reduced labor costs and eliminating the need to lift heavy nets and buckets.
- Control display.

Features

- Cart-mounted pump includes a stainless steel cart with large pneumatic tires (applies to 6" type).
- Self-priming via a rugged industrial priming pump.
- Cast aluminum hand-polished balanced impeller.
- Wireless remote control.
- Can be supplied with fittings for easy change between different hose/pipe sizes.
- VAKI can supply certified hoses ready for direct connection to the pumps.

Remote Control

Available as an option on VAKI Fish Pumps. The Remote puts complete control of the fish pump where it's most needed, in the hands of the operator. The wireless transmitter has a long range and is weatherproof. Its functions allow the operator to turn the prime pump on & off, main motor on & off, and control the rotational speed of the impeller.



Technical Specifications



8" Fish Pump

- Weight: 730 kg
- Dimensions (LxWxH): 203 x 132 x 152cm
- Inlet size: 203mm (8")
- Outlet size: 203mm (8")
- Min. Fish size: 0.2g
- Max. Fish size: 1.2kg
- Pump Speed: 200–500 rpm
- Max. Pump head (TDH): 9m
- Max. Pump suction: 4m
- Max. Horizontal transfer: 2.000m
- Power options: 20hp, 50 or 60Hz, 3 Phase



6" Fish Pump

- Weight: 200 kg
- Dimensions (LxWxH): 170 x 81 x 119cm
- Inlet size: 152mm (6") reduce to 102mm (4") or 50mm (2")
- Outlet size: 152mm (6") reduce to 102mm (4") or 51mm (2")
- Min. Fish size: 0.2g
- Max. Fish size: 400g
- Pump Speed: 200–800 rpm
- Max. Pump head (TDH): 9m
- Max. Pump suction: 3m
- Max. Horizontal transfer: 2.000m
- Power options: 5hp, 50 or 60Hz, 3 Phase

Reducer Kit

6 - 4 inch reducer kit (150mm – 100mm).



Spare Parts Package (optional)

Minor Service Kit – 6” Fish Pump

| | Item # | Parts |
|----|------------|-----------------------|
| 1 | 501 500310 | 6” Drive belt |
| 4 | 501 500315 | Coupler element |
| 5 | 501 500320 | Element cover |
| 9 | 501 500340 | Gasket prime pump |
| 10 | 501 500345 | Impellor prime pump |
| 11 | 501 500350 | Shaft seal prime pump |



Major Service Kit – 6” Fish Pump

| | Item # | Parts |
|----|---------|-------------------------|
| 1 | 290063A | Drive shaft |
| 2 | 520015A | Bearing x 2 |
| 3 | 540018A | Drive belt x 2 |
| 4 | 590030A | Coupler element |
| 5 | 590031A | Element cover |
| 6 | 730013A | Upper shaft seal x 2 |
| 7 | 730014A | Lower shaft seal |
| 8 | 790055A | Check valve gasket assy |
| 9 | 990141A | Gasket prime pump |
| 10 | 990142A | Impellor prime pump |
| 11 | 990143A | Shaft seal prime pump |

Minor Service Kit – 8” Fish Pump

| Item # | Parts |
|--------|----------------------------------|
| 1 | 8” Drive belt x 3 |
| 4 | 501 500315 Coupler element |
| 5 | 501 500320 Element cover |
| 9 | 501 500340 Gasket prime pump |
| 10 | 501 500345 Impellor prime pump |
| 11 | 501 500350 Shaft seal prime pump |

Major Service Kit – 8” Fish Pump

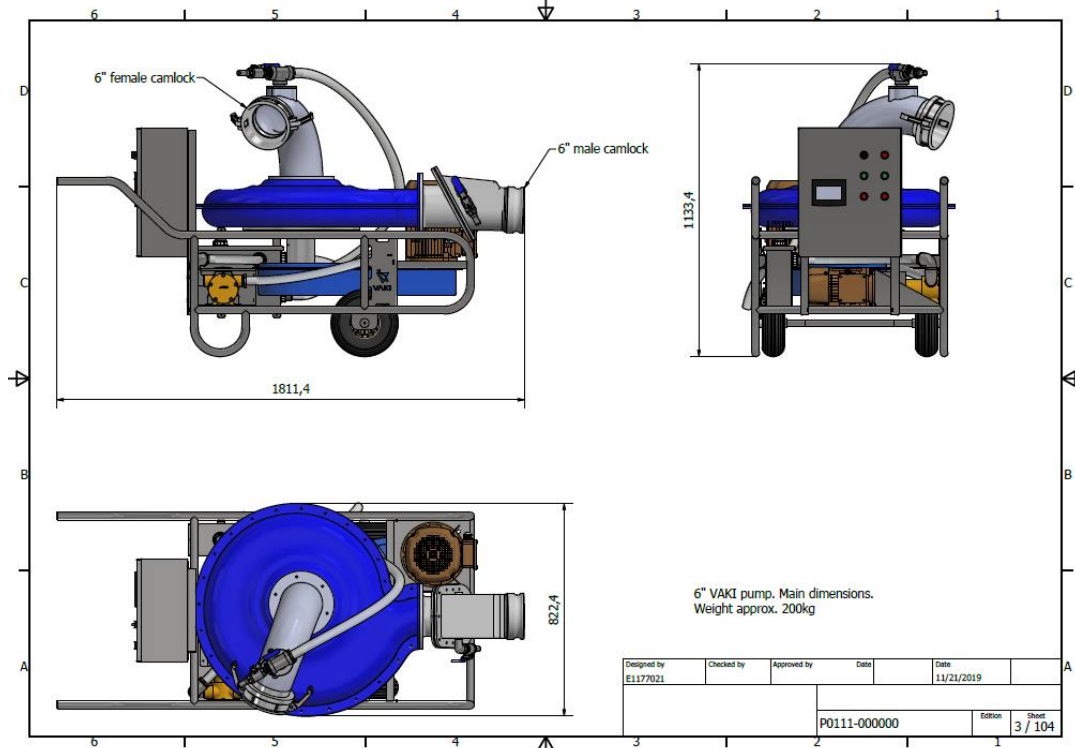
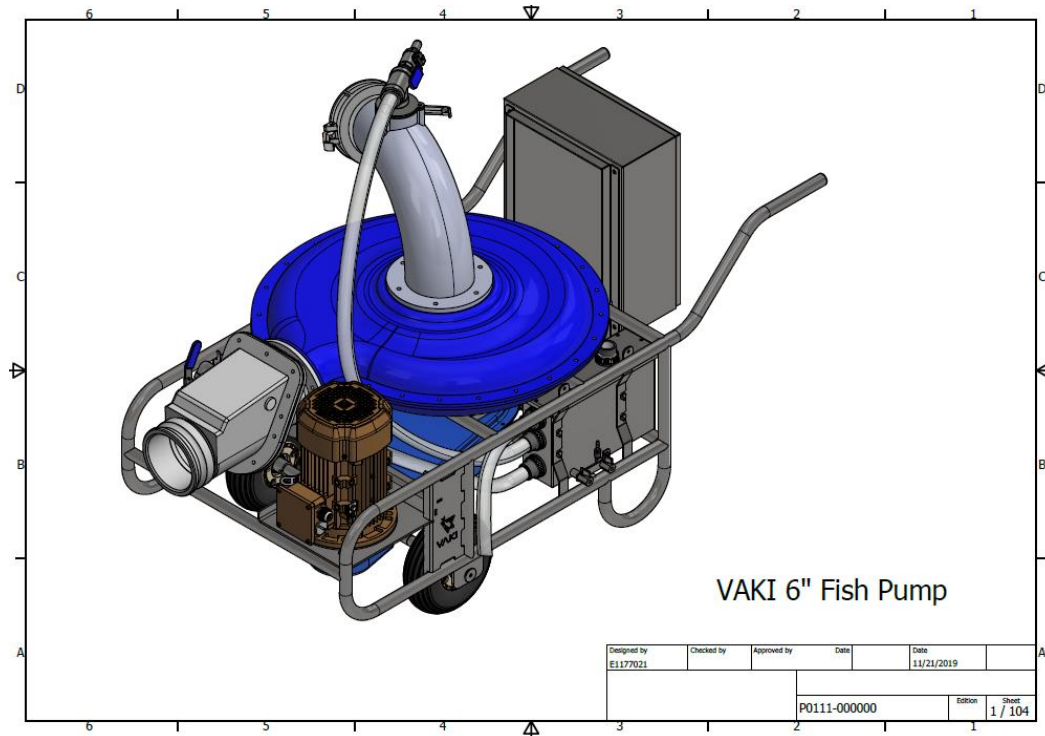
| Item # | Parts |
|--------|---|
| 1 | 8" Drive belt x 3 |
| 2 | 501 500315 Coupler element |
| 3 | 501 500320 Element cover |
| 4 | 501 500345 Impellor prime pump |
| 5 | 501 500350 Shaft seal prime pump |
| 6 | Pump check valve 8" |
| 7 | 501 800100 Bearing locknut shaft collar |
| 8 | 501 800105 O-Ring Buna-N 1/8", 3,75"ID |
| 9 | 501 800110 O-Ring Buna-N 1/8", 3,25"ID |
| 10 | 501 800115 O-Ring Buna-N 3/32", 2 3/16"ID x 2 3/8" OD |
| 11 | 501 800120 Bearing Tapared Roller 55/90 |
| | 501 800125 Bearing Tapared Roller 45/80 |
| | 501 800130 Seal, LIP, LUP 2,50"ID, 3,75"OD |
| | 501 800135 Seal, LIP, LUP 1,625"ID, 2,125"OD |
| | 501 800140 Mechanical Shaft Seal 2,5" ID |

Specifications

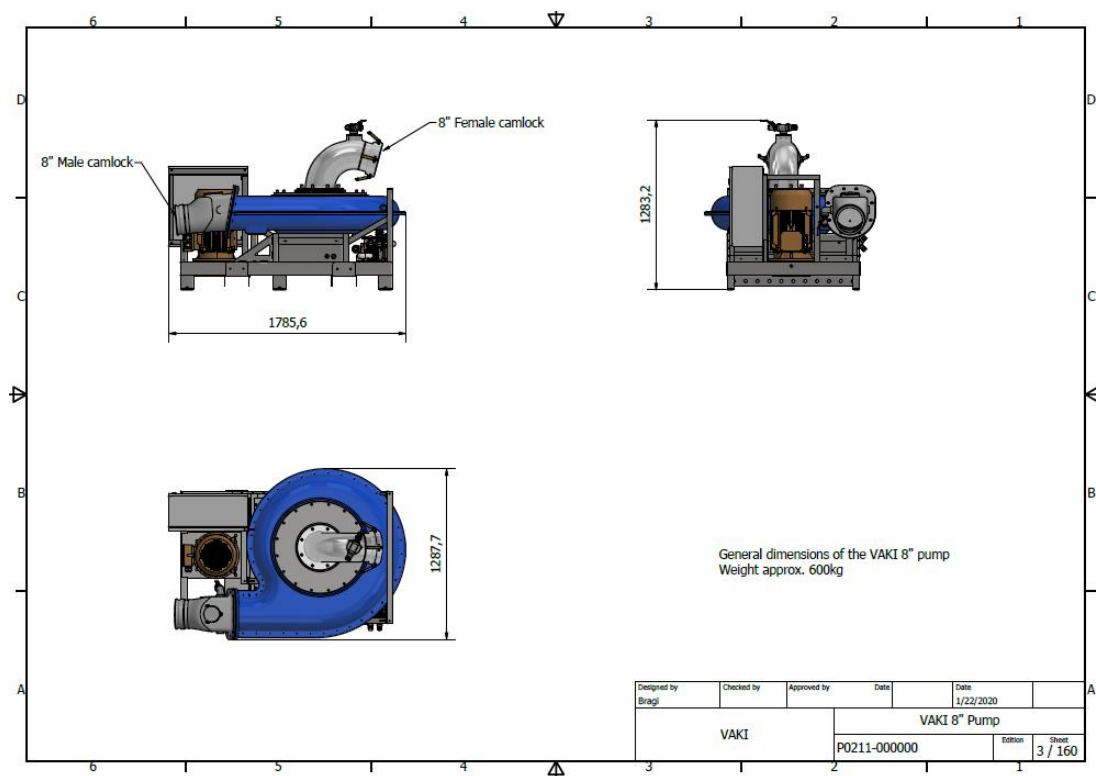
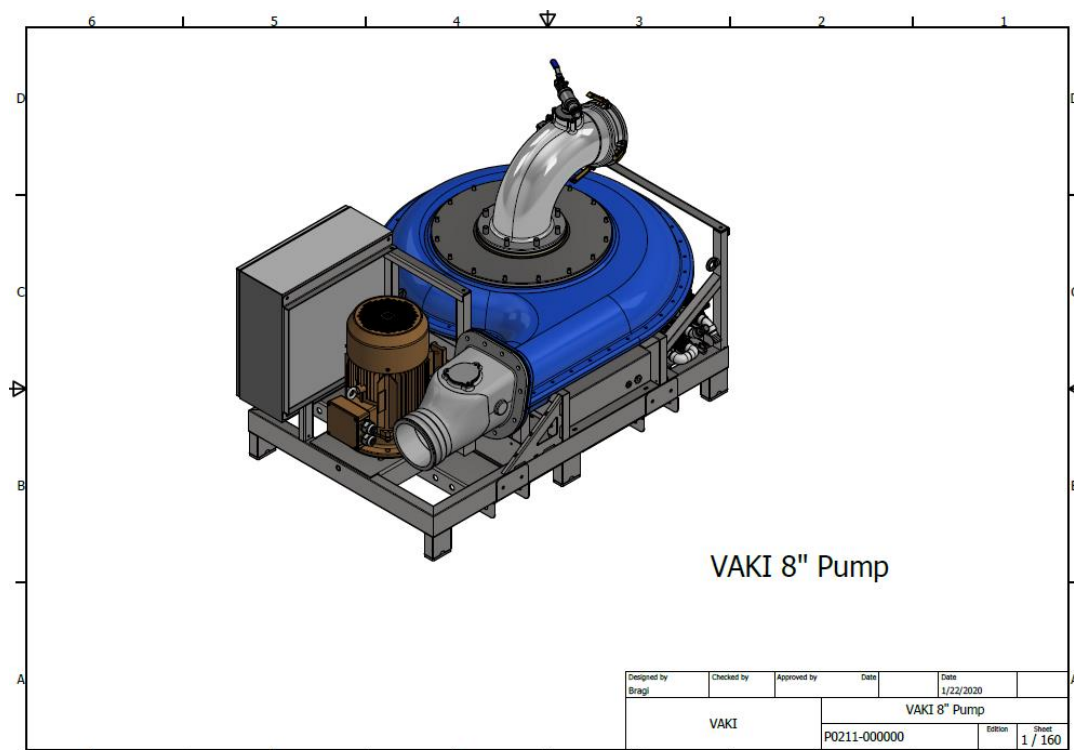
| | 6" Fish Pump | 8" Fish Pump |
|--------------------------------------|--|--|
| Details | 230 - 415 vAC Three Phase 50 or 60 Hz | 380 – 500vAC Three Phase 50 -60Hz |
| Smart Version | Yes | Yes |
| Main Drive | 4kW/5.5hp | 15kW/20.4hp |
| Main Drive Control | Variable freq. drive | Variable freq. drive |
| Prime Pump drive | 1.5kW/2hp | 1.5kW/2hp |
| Max current, during prime/pumping | 16/32 amps | 32/64 amps |
| Max water flow @ 5.5m Head | 44 liters / sec | 126 liters / sec |
| Display / Remote control | Yes | Yes |
| Fittings supplied | 6" hosebarb adapters for inlet and outlet | 8" hosebarb adapters for inlet and outlet |
| Technical Support | Yes | Yes |
| Warranty | Two Years | Two Years |

Layout Drawings

6" Fish Pump



8" Fish Pump



More information on <https://vakiiceland.is/vaki-fish-pumps-2/>

SMARTFLOW

The SmartFlow System facilitates the optimization of VAKI Grading Systems in order to achieve high levels of efficiency in grading and counting accuracy.

VAKI Smart Grader and Smart Pump can be controlled and fine-tuned using the SmartFlow software on the counter.

The VAKI SmartFlow program allows either:

- Operator control of the grader and pump remotely from the VAKI Counter.
- Control of the grader and pump automatically by the VAKI Counter.



SMART FLOW

AUTOMATIC FEEDBACK CONTROL

ONLINE DATABASE / LOCAL SERVER

PUMP SPEED ADJUSTMENT



DENSITY CONTROL



COUNTING REPORT



VAKI Customer Care Package

VAKI provide inclusive service and training packages for checks and support of your VAKI equipment by our skilled service team.

This also gives us the opportunity to advise and make recommendations on the operation of your equipment and identify any technical, set up or training issues that may be affecting accuracy or optimal use of your VAKI equipment.

Smart Monitoring

The VAKI Smart Pump can be connected to our VAKI Fish Counters, which can upload valuable data from the fish pump. Smart monitoring of the VAKI Fish Pump enables us to improve service, implement preventative maintenance at the right time, improve reliability and reduce down-time of equipment.

| On Site | Smart | Complete |
|--|--|--|
| Online service history for all equipment | Online service history for all equipment | Online service history for all equipment |
| Unlimited telephone and online support for troubleshooting and technical assistance. | Unlimited telephone and online support for troubleshooting and technical assistance. | Unlimited telephone and online support for troubleshooting and technical assistance. |
| Registration of fish pump in online service database | Registration of fish pump in online service database | Registration of fish pump in online service database |
| Annual on-site visits to review equipment | Smart monitoring of equipment | Annual on-site visits to review equipment |
| Service Report | Software upgrades | Service Report |
| Preferential service and contract hourly rate | Smart monitoring health reports | Preferential service and contract hourly rate |
| | | Smart monitoring of equipment |
| | | Software upgrades |
| | | Smart monitoring health reports |